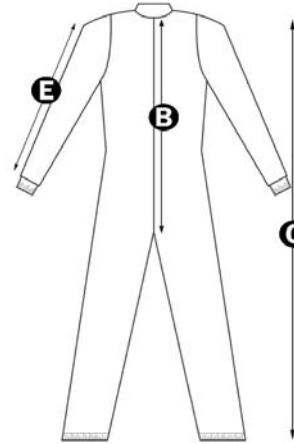
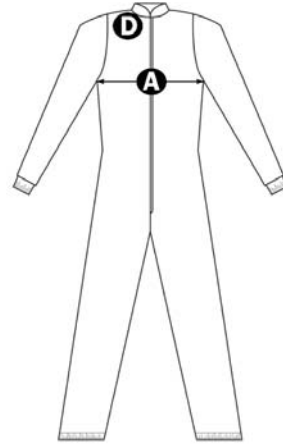


Garment Features

- Full cleanroom construction
- Coverall with center front zipper
- Stud adjustment at neck
- Raglan sleeves
- Knit cuff
- Elastic ankle
- Mandarin collar
- Available in sizes SM-3XL



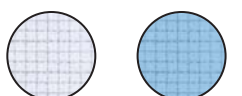
Garment Measurements

SIZE	SM	MD	LG	XL	2XL	3XL
A - Chest	25.5"	26.7"	27.1"	28.3"	29.5"	30.7"
B - Center Back	34.6"	35.4"	36.2"	37"	38.5"	40.5"
C - Overall Length	28.2"	59.8"	61"	62.9"	64.1"	68.5"
D - Neck	17.3"	18.1"	19.2"	20.4"	21.6"	22.8"
E - Zipper Length	21.6"	21.6"	23.6"	23.6"	23.6"	25.5"
F - Sleeve Length	28.7"	29.9"	30.3"	30.7"	31.4"	35.4"

* +/- 1 inch

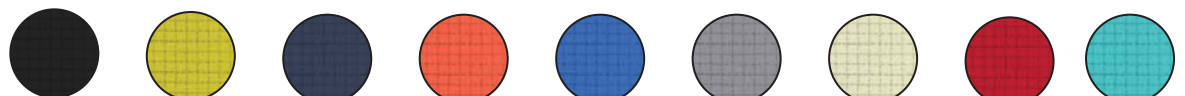
CleanPro® C3.2 Material Information	
Weave	Plain
Carbon Configuration	Grid
Weight	5.4 oz/yard
Air Permeability	4.7 CFM
Moisture Permeability	7.156 g/m ² /second
Moisture Vapor Transmission Rate	618 g/m ² /24 hours
Frictional Static Charge	90V
Decay Time	± 0.01 sec NFPA-99
Surface Resistivity	10 ⁵ -10 ⁶ ohm/m ²
Particle Efficiency	0.3 µm: 81%, 0.5 µm: 85%
Cleanroom Class	ISO Class 4, Fed. Class 10

Stocked Colors:



White Light Blue

Additional Colors:



Black* Bright Yellow* Navy* Orange* Royal Blue* Gray* Pastel Yellow* Red* Green*

*Minimum order of 50 pieces for non-stocked colors.